

FoMaS: Basic Notation Exam

1. Pitch-class Identification

Write the pitch-class (as an integer) beneath each note below.

2 3 4 5 6 7 8 9 10 11 12

ex. 0

2. Pitch Construction

In each measure, notate three (3) pitches that belong to the pitch-class given beneath the staff.

2 3 4 5 6 7 8 9 10 11 12

ex.

pitch-class 0 9 8 6 10 3 4 11 7 5 2 1

3. Interval Identification

Write the specific interval below each pair of pitches.

2 3 4 5 6 7 8 9

ex. m3

4. Interval Construction

In each measure, write a second pitch next to the given note that forms the specified interval.

2 3 4 5 6 7 8 9

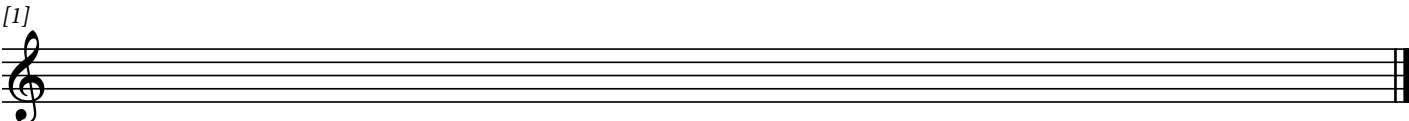
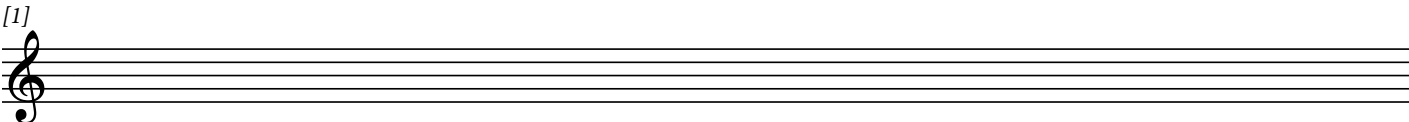
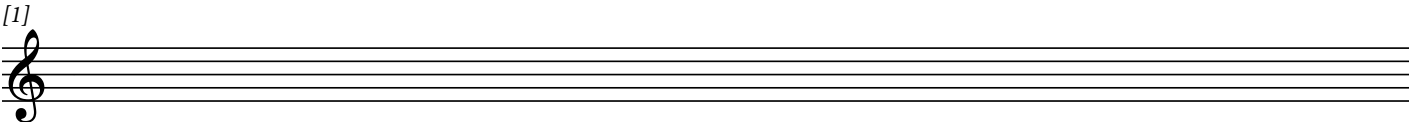
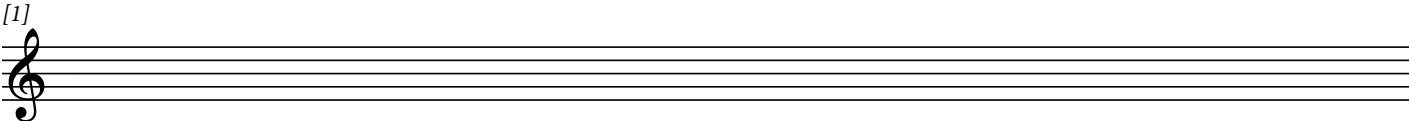
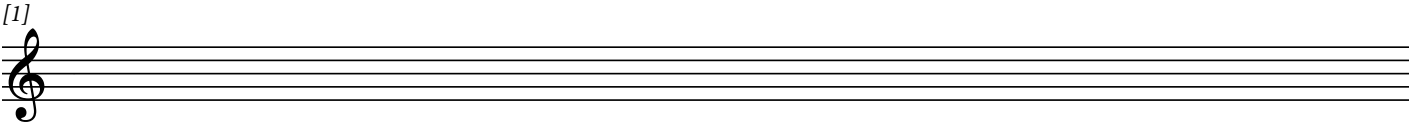
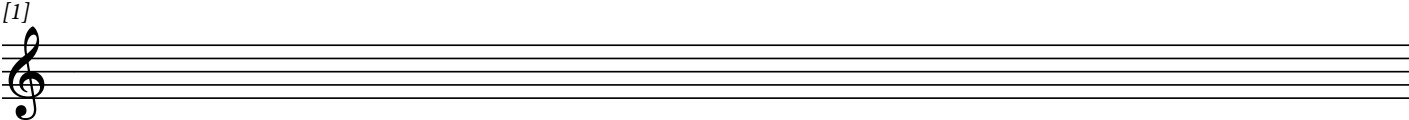
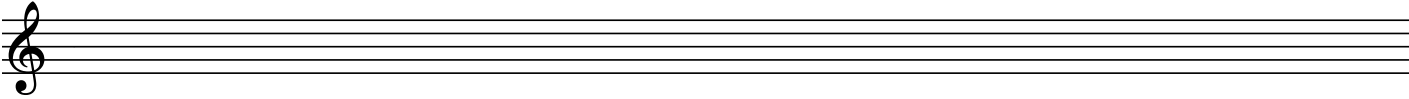
ex.

m3 P4 A2 M3 d4+8ve M7 M6+8ve P5 m7

5. Beams and Ties in Meter

Renotate the first bar in each system to (1) show the rhythm correctly in the given meter using beams and ties, and (2) adjust the direction of stems as needed.

6. Blank 1



7. Blank 2

